

# POWER TEAM<sup>®</sup>

HYDRAULIC PUMPS | CYLINDERS | JACKS | PULLERS | TOOLS

Heavy duty grade high force hydraulic products, systems and tools

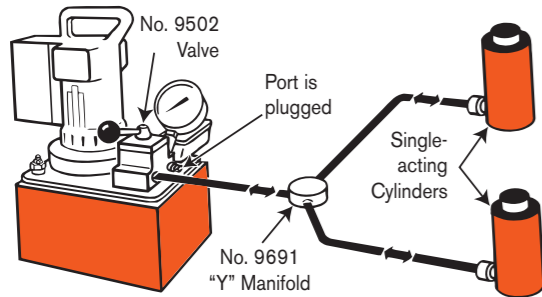




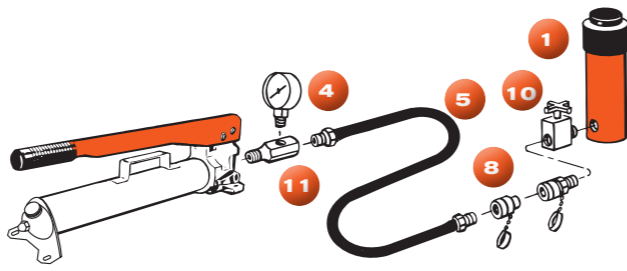
This catalog reflects our most used products. Please refer to our full line catalog for the complete range.

# Hydraulic circuits - Pumps, Cylinders, Controls

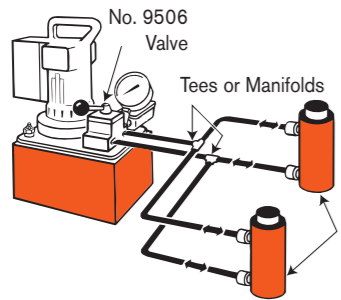
**1** Single-acting cylinder or cylinders in the circuit, controlled by a pump mounted valve.



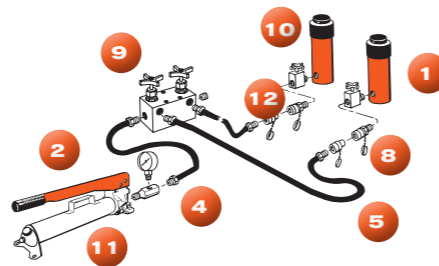
Basic single-acting system with a hand pump, gauge, hose and single-acting cylinder.



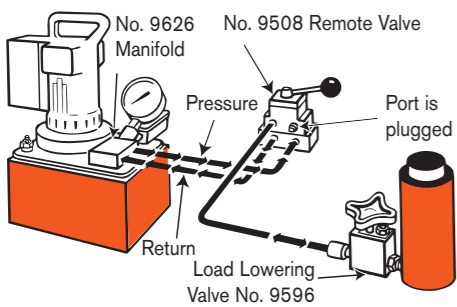
**2** Double-acting cylinder or cylinders in the circuit, controlled by a pump mounted valve.



Basic single-acting system with a hand pump, gauge, hose, multiple shut-off valves, load lowering valves and multiple cylinders.

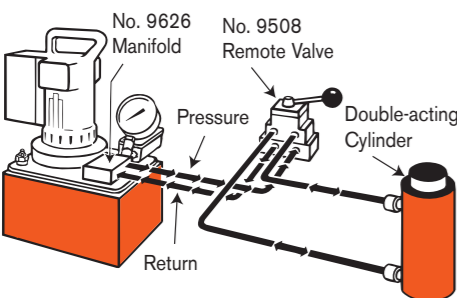


**3** Single-acting cylinder controlled by a remote mounted valve.



- 1** Cylinder – applies hydraulic force.
- 2** Pump – a device for converting mechanical energy to fluid energy.
- 4** Gauge – measures bar pressure and/or force.
- 5** Hose – transports hydraulic fluid.
- 8** Quick Coupling – “hose half” and “cylinder half” couplings are used for quick connection and fluid flow check when separated. (No. 9796 and 9798)
- 9** Shut-Off Valve – regulates the flow of hydraulic fluid to or from cylinders. (No. 9642 or 9644)
- 10** Load-Lowering Valve – allows metered lowering of cylinder and provides safety when prolonged load holding is required. (No. 9596)
- 11** Tee Gauge Adapter – allows for installation of pressure/tonnage gauge anywhere in the hydraulic system. (No. 9670)
- 12** Pipe Plug – for blocking unused ports within the system. (No. 9687)

**4** Double-acting cylinders controlled by a remote mounted valve.



# Selection Chart

**Choose the right pump:** This chart helps you calculating the time required for a cylinder to lift a load when powered by a 700 bar Power Team pump. For the hand pumps the number indicates the number of strokes to extend 25 mm. For the electric/air/gas pumps the number indicates the number of seconds to extend 25 mm.

		Cylinder Capacity (Tons)														
		STAGE	5	10	15	20	25	30	55	75	100	150	200	300	400	500
<b>Hand Pumps *</b>	P12	Single	14	32	44	65	72	93								
	P55	Single	6	14	19	28	31	40	71							
	P19/	Low	4	8	10	15	17	21								
	P19L	High	13	30	42	59	68	86								
	P59F	Low	1,8	4,1	5,7	8	9	12	20	29						
		High	8	17	24	34	48	50	85	122						
	P59(L)	Low	1,5	3,2	4,7	7	7,7	9,7	16,7	23,9						
	P157	High	6	14	19	28	31	40	71	101						
	P159	Low	0,5	1	1,3	1,9	2,2	2,8	5	7	9	13	18			
	P300	High	7	15	21	30	34	43	77	110	143	200	250			
	P460	Low	0,1	0,3	0,6	0,6	0,7	0,9	1,5	2,2	2,8	4,2	5,6	8,4	11,2	
		High	3,3	7,7	9	14	17,5	22	37	55	71	105	143	213	284	
<b>Electric Hydraulic Pumps **</b>	PE10	Low	0,5	1,2	1,6	2,2	2,6	3,2	5,5							
		High	6	13,4	18,9	27	31	39	66,2							
	PE17	Low	0,2	0,5	0,7	0,9	1,1	1,4	2,3	3,3	4,3	6,5	8,7			
		High	3,5	7,9	10,9	16	18	23	39	56,3	73	109	146			
	PE18	Low	0,4	0,8	1,2	1,6	1,8	2,3	3,9	5,7	7,3	10,8	14,6	21,9	29,2	
		High	3,3	7,5	10,3	15	17	21	37	53	69	102	136	207	276	
	PE21	Low	0,2	0,5	0,7	1	1,1	1,4	2,5	3,6	4,6	6,8	9,2	13,8	18,4	
		High	2,8	6,4	9	13	15	19	32	45,5	59	88	118	177	236	
	PED25	Low	0,2	0,4	0,6	0,9	1	1,3	2,2	3,2	4,1	6,1	8,3	12	15,7	19,9
		High	2,4	5,4	7,5	10,6	12,4	15,6	26,5	38,2	49,5	73,6	99,1	144,3	188,5	238,6
	PE30	Low	0,2	0,45	0,6	0,9	1	1,3	2,2	3,2	4,1	6				
		High	2	4,5	6	9	10	13	22	32	41	60				
PE46	Low	0,1	0,3	0,4	0,5	0,6	0,7	1,3	1,8	2,4	3,5	4,7	7,2	9,6		
	High	1,3	2,9	4,1	5,9	6,8	8,6	14	22	28	42	56	84	112		
PE55/	Low	0,1	0,2	0,3	0,4	0,4	0,6	0,9	1,4	1,8	2,6	3,5	5,4	7,2		
	High	1,1	2,4	3,4	4,8	5,6	7,1	12	17,8	23	34	45	69	92		
PQ60	Low	0,1	0,2	0,3	0,4	0,4	0,5	0,9	1,3	1,7	2,5	3,4	5,1	6,8	8,5	
	High	1	2,2	3,3	4,4	5,2	6,5	11	16,2	21	31	41	63	84	105	
PQ120	Low	0,1	0,2	0,3	0,4	0,4	0,5	0,9	1,3	1,7	2,5	3,4	5,1	6,8	8,5	
	High	0,5	1,1	1,6	2,2	2,6	3,2	5,5	7,7	10	15	21	30	40	50	
PE400	Low	0,1	0,1	0,2	0,2	0,3	0,3	0,6	0,8	1	1,5	2,1	3	4	5	
	High	0,1	0,3	0,4	0,6	0,7	0,9	1,6	2,2	2,9	4,4	5,9	8,7	11,6	14,5	
<b>Air Hydraulic Pumps **</b>	PA6/	Single	10	22,4	31	44,4	51,3	65,2	-	-	-	-	-	-	-	
	PA9	Single	10	22,4	31	44,4	51,3	65,2	-	-	-	-	-	-	-	
	PA17	Low	0,2	0,5	0,7	0,9	1,1	1,4	2,3	3,3	4,3	6,5	8,7	-	-	
High		3,5	7,9	10,9	16	18	23	39	56	73	109	146				
PA46	Low	0,1	0,3	0,4	0,5	0,6	0,7	1,3	2	2,4	3,5	4,7	7,2	9,6		
	High	1,3	2,9	4,1	5,9	6,8	8,6	14	22	28	42	56	84	112		
PA55	Low	0,1	0,3	0,4	0,6	0,7	0,9	1,5	2,2	2,8	4,1	5,5	8,4	11,2		
	High	1,1	2,4	3,4	4,8	5,6	7,1	12	18	23	34	45	69	92		
<b>Gas Hydraulic Pumps **</b>	PG30	Low	0,3	0,7	1	1,3	1,6	2	3,3	4,8	6,2	9,3	12,4	18,1	-	
		High	2	4,5	6,3	8,9	10,3	13	22	31,8	41,3	61,4	83	121	-	
	PG55	Low	0,1	0,3	0,4	0,6	0,7	0,8	1,4	2	2,6	3,9	5,2	7,6	9,9	12,5
High		1,1	2,5	3,5	4,9	5,6	7,1	12,1	17,3	22,5	33,5	45	66	86	109	
PG120	Low	0,1	0,3	0,4	0,6	0,7	0,8	1,4	2	2,6	3,9	5,2	7,6	9,9	12,5	
	High	0,5	1	1,5	2	2,4	3	5,1	7,3	9,5	14,2	19,1	27,8	36,3	46	
PG400	Low	0,1	0,1	0,2	0,2	0,3	0,3	0,6	0,8	1	1,5	2	3	3,8	4,9	
	High	0,2	0,3	0,5	0,7	0,8	1	1,7	2,4	3,1	4,6	6,2	9	11,8	15	

- Generally Recommended  
- Marginal Check  
- Not Recommended for most applications

Speed \* number of strokes to extend 25 mm  
 \*\* number of seconds to extend 25 mm

## Selection Chart - Choose the right cylinder

	Retracted			Base			Order No.
	SA and DA Tons	Stroke mm.	Height mm.	Type of return	Mount. Duty hole	Collar Thread	

2		127	233		High	-	✓	RP25	
5 pull		139,7	302		High	-	✓	RP55	
5		25,4	111		High	✓	✓	C51C	
		82,6	165		High	✓	✓	C53C	
		133,4	216		High	✓	✓	C55C	
		133,4	267		High	-	✓	C55CBT	
		184,2	273		High	✓	✓	C57C	
		235	324		High	✓	✓	C59C	
		14,3	41		High	✓	-	RLS50	
		257,2	349		High	✓	✓	C1010C	
10		257,2	394		High	-	✓	C1010CBT	
		308	400		High	✓	✓	C1012C	
		358,8	451		High	✓	✓	C1014C	
		25,4	92		High	✓	✓	C101C	
		54	121		High	✓	✓	C102C	
		104,8	172		High	✓	✓	C104C	
		155,6	248		High	✓	✓	C106C	
		155,6	292		High	-	✓	C106CBT	
		206,4	299		High	✓	✓	C108C	
		254	391		High	✓	✓	RD1010	
		158,8	297		High	✓	✓	RD106	
		63,5	133		High	✓	-	RH102	
		203,2	287		High	✓	-	RH108	
		11,1	45		High	✓	-	RLS100	
		38,1	89		High	-	-	RSS101	
	12		7,9	56		High	✓	✓	RH120
		41,3	122		High	-	✓	RH121	
		41,3	122		High	-	✓	RH121T	
		76,2	184		High	-	✓	RH123	
15		257,2	373		High	✓	✓	C1510C	
		308	424		High	✓	✓	C1512C	
		358,8	475		High	✓	✓	C1514C	
		406,4	522		High	✓	✓	C1516C	
		25,4	124		High	✓	✓	C151C	
		54	149		High	✓	✓	C152C	
		104,8	200		High	✓	✓	C154C	
		155,6	271		High	✓	✓	C156C	
17,5		206,4	322		High	✓	✓	C158C	
		50,8	175		High	✓	-	RT172	
	20		54	162		High	-	-	RA202
			104,8	213		High	-	-	RA204
		155,6	264		High	-	-	RA206	
		50,8	156		High	✓	✓	RH202	
	76,2	154		High	✓	-	RH203		
	152,4	308		High	✓	✓	RH206		
	11,1	51		High	✓	-	RLS200		
	44,5	95		High	-	-	RSS202		
25		260,4	375		High	✓	✓	C2510C	
		311,2	425		High	✓	✓	C2512C	
		362	476		High	✓	✓	C2514C	
		362	543		High	-	✓	C2514CBT	
		25,4	140		High	✓	✓	C251C	
		50,8	165		High	✓	✓	C252C	
		101,6	216		High	✓	✓	C254C	
		158,8	273		High	✓	✓	C256C	
25		158,8	314		High	-	✓	C256CBT	
		209,6	324		High	✓	✓	C258C	
		362	518		High	✓	✓	RD2514	
		158,8	340		High	✓	✓	RD256	

	Retracted			Base			Order No.
	SA and DA Tons	Stroke mm.	Height mm.	Type of return	Mount. Duty hole	Collar Thread	

30		54	187		High	-	-	RA302	
		104,8	238		High	-	-	RA304	
		155,6	289		High	-	-	RA306	
		257,2	438		High	-	✓	RH3010	
		63,5	159		High	✓	✓	RH302	
		76,2	179		High	✓	-	RH303	
		152,4	248		High	✓	✓	RH306	
		152,4	281		High	✓	-	RH306D	
		149,2	283		High	-	-	RHA306	
		12,7	59		High	✓	-	RLS300	
		61,9	117		High	-	-	RSS302	
		63,5	214		High	✓	-	RT302	
50		76,2	181		High	✓	✓	RH503	
		15,9	67		High	✓	-	RLS500S	
		60,3	127		High	-	-	RSS502	
		76,2	268		High	✓	-	RT503	
		260,4	384		High	✓	✓	C5510C	
		336,6	460		High	✓	✓	C5513C	
		50,8	175		High	✓	✓	C552C	
		108	232		High	✓	✓	C554C	
		158,8	283		High	✓	✓	C556C	
		254	329	Load	-	-	-	R5510C	
		254	365	Load	-	-	-	R5510L	
		50,8	125	Load	-	-	-	R552C	
55		50,8	162	Load	-	-	-	R552L	
		152,4	264	Load	-	-	-	R556C	
		152,4	321	Load	-	-	-	R556L	
		254	384		High	✓	-	RA5510	
		54	171		High	-	-	RA552	
		104,8	222		High	-	-	RA554	
		155,6	273		High	✓	-	RA556	
		155,6	318		High	-	-	RA556L	
		50	125	Load	High	-	-	RC0552P	
		333,4	504		High	✓	✓	RD5513	
		463,6	657		High	✓	✓	RD5518	
		158,8	329		High	✓	✓	RD556	
60		257,2	459		High	-	✓	RH6010	
		76,2	235		High	✓	✓	RH603	
		127	241		High	✓	-	RH605	
		152,4	318		High	✓	✓	RH606	
		101,6	241		High	✓	-	RHA604D	
		333,4	492		High	-	✓	C7513C	
		155,6	314		High	-	✓	C756C	
	75		15,9	79		High	✓	-	RLS750S
			333,4	518		High	✓	✓	RD8013
			260,4	429		High	-	✓	C10010C
			50,8	219		High	-	✓	C1002C
			168,3	337		High	-	✓	C1006C
		254	343	Load	-	-	-	R10010C	
		254	372		-	-	-	R10010D	
		254	387	Load	-	-	-	R10010L	
100			50,8	140	Load	-	-	-	R1002C
			50,8	169		-	-	-	R1002D
			50,8	184	Load	-	-	-	R1002L
			152,4	241	Load	-	-	-	R1006C
		152,4	270	Load	-	-	-	R1006D	
		152,4	286	Load	-	-	-	R1006L	
		54	197		High	-	-	RA1002	
		158,8	298		High	-	-	RA1006	

	Retracted			Base			Order No.
	SA and DA Tons	Stroke mm.	Height mm.	Type of return	Mount. Duty hole	Collar Thread	

100		158,8	340	Load	High	-	-	RA1006L		
		45	137	Load	High	-	-	RC1002P		
		333,4	515		High	✓	✓	RD10013		
		511,2	718		High	✓	✓	RD10020		
		168,3	350		High	✓	✓	RD1006		
		38,1	165		High	-	-	RH1001		
		260,4	503		High	-	✓	RH10010		
		76,2	254		High	-	-	RH1003		
		152,4	314		High	✓	-	RH1006		
		15,9	86		High	✓	-	RLS1000S		
		57,2	140		High	-	-	RSS1002		
		38,1	144		High	-	-	RSS1002D		
150		123,8	384		High	✓	-	RT1004		
		254	365	Load	-	-	-	R15010C		
		254	392		-	-	-	R15010D		
		254	410	Load	-	-	-	R15010L		
		50,8	162	Load	-	-	-	R1502C		
		50,8	189		-	-	-	R1502D		
		50,8	206	Load	-	-	-	R1502L		
		152,4	264	Load	-	-	-	R1506C		
		152,4	291		-	-	-	R1506D		
		152,4	308	Load	-	-	-	R1506L		
		333,4	543		High	✓	✓	RD15013		
		460,4	674		High	✓	✓	RD15018		
155		168,3	378		High	✓	✓	RD1506		
		127	308		High	-	-	RH1505		
		203,2	349		High	-	-	RH1508		
		14,3	102		High	✓	-	RLS1500S		
		45	148	Load	High	-	-	RC1552P		
		254	394	Load	-	-	-	R20010C		
		254	410		-	-	-	R20010D		
		254	445	Load	-	-	-	R20010L		
		50,8	191	Load	-	-	-	R2002C		
		50,8	207		-	-	-	R2002D		
		50,8	241	Load	-	-	-	R2002L		
	200		152,4	292	Load	-	-	-	R2006C	
		152,4	308		-	-	-	R2006D		
		152,4	343	Load	-	-	-	R2006L		
		333,4	572		High	✓	✓	RD20013		
		460,4	724		High	✓	✓	RD20018		
		168,3	406		High	✓	✓	RD2006		
		203,2	408		High	✓	-	RH2008		
240			45	155	Load	High	-	-	RC2402P	
		250		76,2	290		High	-	-	RSS2503
				254						



This catalog reflects our most used products. Please refer to our full line catalog for the complete range.

### WHAT TYPE OF CYLINDER DO YOU NEED

- To determine a cylinder's force capacity:
 
$$\text{Force kg} = \text{Cylinder Effective Area (cm}^2\text{)} \times \text{Bar from Pump}$$
- To determine oil capacity of a cylinder:
 
$$\text{Oil Capacity (cm}^3\text{)} = \text{Cylinder Effective Area (cm}^2\text{)} \times \text{Cylinder Stroke (cm)}$$
- To determine reservoir capacity needed for a multiple cylinder system:
 
$$\text{Usable Oil} = \text{Oil Cap. of Cyl. (cm}^3\text{)} \times \text{Number of Cyl. in System}$$

Note: For double-acting cylinders, oil in rod end of cylinder must be subtracted to determine capacity.

### Low profile [RLS-series]

Single-acting | Spring-return

Can fit into extremely small spaces

- A female half coupler is standard with each cylinder
- Unique heavy duty spring provides fast piston return



Force tons	Stroke mm.	Order No.	Oil Cap cc.	Retracted Height mm.	Weight kg.
5	14,3	RLS50	10	41,3	1,0
10	11,1	RLS100	17	44,5	1,5
20	11,1	RLS200	33	50,8	2,5
30	12,7	RLS300	53	58,7	3,9
50	15,9	RLS500S	99	66,7	6,3
75	15,9	RLS750S	163	79,4	10,6
100	15,9	RLS1000S	202	85,7	13,6
150	14,3	RLS1500S	282	101,6	23,6

### Shorty Cylinders [RSS-series]

Single-acting | Spring-return

Restricted space for cylinder

- Grooved piston top keeps load from sliding
- Cylinder can be "dead-ended" at full capacity



Force tons	Stroke mm.	Order No.	Oil Cap cc.	Retracted Height mm.	Weight kg.
10	38,1	RSS101	56	88,9	2,7
20	44,5	RSS202	126	95,3	4,5
30	61,9	RSS302	259	117,5	6,7
50	60,3	RSS502	374	127,0	10,5
100	57,2	RSS1002	725	139,7	21,4
100	38,1	RSS1002D	482	144,5	24,7
250	76,2	RSS2503	2.469	290,5	99,7

### General Purpose [C-series]

Single-acting | Spring-return

Heavy duty lifting or pushing

- Chrome plated piston rod resists wear and corrosion
- Solid steel cylinder body for durability



Force tons	Stroke mm.	Order No.	Oil Cap cc.	Retracted Height mm.	Weight kg.
5	25,4	C51C	18	110,3	1,0
5	82,6	C53C	52	165,1	1,5
5	133,4	C55C	85	215,9	1,8
5	184,2	C57C	118	273,1	2,3
5	235,0	C59C	151	323,9	2,6
10	25,4	C101C	36	92,1	1,8
10	54,0	C102C	79	120,7	2,3
10	104,8	C104C	151	171,5	3,0
10	156,6	C106C	225	247,7	4,3
10	206,4	C108C	362	298,5	5,0
10	257,2	C1010C	370	349,3	5,9
10	308,0	C1012C	444	400,1	6,6
10	358,8	C1014C	518	450,9	7,3
10	406,4	C1016C	592	520,7	8,4
15	25,4	C151C	51	123,8	3,4
15	54,0	C152C	110	149,2	4,0
15	104,8	C154C	211	200,0	5,2
15	155,6	C156C	315	271,4	6,9
15	206,4	C158C	418	322,2	8,1
15	257,2	C1510C	521	373,0	9,4
15	308,0	C1512C	625	423,8	10,5
15	358,8	C1514C	728	474,6	11,8
15	406,4	C1516C	824	522,3	12,8
25	25,4	C251C	84	139,7	5,4
25	50,8	C252C	169	165,1	6,3
25	101,6	C254C	338	215,9	8,0
25	158,8	C256C	528	273,1	9,8
25	209,6	C258C	697	323,9	11,6
25	260,4	C2510C	865	374,4	13,3
25	311,2	C2512C	1.036	425,5	15,0
25	362,0	C2514C	1.205	476,3	16,7
55	50,8	C552C	362	174,6	14,7
55	108,0	C554C	769	231,8	18,7
55	158,8	C556C	1.131	282,6	23,1
55	260,4	C5510C	1.853	384,2	30,4
55	336,6	C5513C	2.398	460,4	35,3
75	155,6	C756C	1.596	314,3	33,3
75	333,4	C7513C	3.421	492,1	49,6
100	50,8	C1002C	675	219,1	28,5
100	168,3	C1006C	2.245	336,6	41,2
100	260,4	C10010C	3.467	428,6	51,2

### Center Hole [RH-series]

Single-acting | Spring-return

Ideal for pulling and tensioning of cables, anchor bolts, forcing screws, etc.

- All cylinders except RH120 are furnished with female half coupler



Force tons	Stroke mm.	Order No.	Oil Cap cc.	Centre Hole mm.	Retracted Height mm.	Weight kg.
10	63,5	RH102	91	19,4	134,9	4,1
10	203,2	RH108	290	19,4	287,3	8,5
12	7,9	RH120	14	17,5	55,6	1,4
12	41,3	RH121	74	20,2	122,2	3,0
12	41,3	RH121T	74	17,5	122,2	3,0
12	76,2	RH123	136	20,6	184,2	4,0
20	50,8	RH202	155	27,4	155,6	7,3
20	76,2	RH203	193	26,6	154,0	9,1
20	152,4	RH206	465	27,4	308,0	13,7
30	63,5	RH302	260	32,9	158,8	11,6
30	149,2	RHA306	625	32,5	283,4	9,9
30	152,4	RH306	625	32,5	247,7	17,7
50	76,2	RH503	534	42,5	181,0	21,2
60	76,2	RH603	607	54,0	235,0	27,2
60	152,4	RH606	1.211	54,0	311,2	35,4
100	76,2	RH1003	1.014	79,4	254,0	52,2

### Aluminum [RA-series]

Single-acting | Spring return

For jacking and other non-production operations

- Half the weight of steel cylinders
- Aluminum body resists sparking in explosive environments



Force tons	Stroke mm.	Order No.	Oil Cap cc.	Retracted Height mm.	Weight kg.
20	54,0	RA202	154	161,9	3,5
20	104,8	RA204	300	212,7	4,2
20	155,6	RA206	445	263,5	5,1
30	54,0	RA302	226	187,3	5,0
30	104,8	RA304	439	238,1	5,9
30	155,6	RA306	652	288,9	6,8
55	54,0	RA552	386	171,5	7,3
55	104,8	RA554	746	222,3	8,9
55	155,6	RA556	1.109	273,1	10,9
55	254,0	RA5510	1.811	384,2	14,4
100	54,0	RA1002	718	196,9	15,1
100	158,8	RA1006	2.116	298,5	22,6

### High Tonnage [R..C-series]

Single-acting | Load return

Push, Press for lowcycle application

- Low-cycle, gravity return
- Alloy heat treated piston and body for reliability and strength



Force tons	Stroke mm.	Order No.	Oil Cap cc.	Retracted Height mm.	Weight kg.
55	51	R552C	362	125,4	12,3
55	152	R556C	1.087	227,0	22,7
55	254	R5510C	1.811	328,6	32,7
100	51	R1002C	677	139,7	23,6
100	152	R1006C	2.030	241,3	40,4
150	51	R1502C	1.007	161,9	41,8
150	152	R1506C	3.019	263,5	68,6
150	254	R15010C	5.032	365,1	95,3
200	51	R2002C	1.355	190,5	65,8
200	152	R2006C	4.062	292,1	100,3
280	51	R2802C	1.861	190,5	91,6
280	152	R2806C	5.583	292,1	136,7
355	51	R3552C	2.326	231,8	137,1
355	152	R3556C	6.975	233,4	197,0
355	254	R35510C	11.624	435,0	256,5
430	51	R4302C	2.841	263,5	199,8
430	152	R4306C	8.520	365,1	276,5
565	51	R5652C	3.710	292,1	289,7
565	152	R5656C	11.129	393,7	389,5
565	254	R56510C	18.548	495,3	489,4

### High Tonnage [RC..C-series]

Single-acting | Load return

Push, Press and Lift

- Low cycle, gravity return
- Overflow port prevents piston from being overextended under load
- Alloy heat treated piston and body for reliability and strength



Force tons	Stroke mm.	Order No.	Oil Cap cc.	Retracted Height mm.	Weight kg.
740	50	RC7402C	4.811	265	300
740	150	RC7406C	14.132	365	416
740	250	RC74010C	24.053	465	530
965	50	RC9652C	6.283	290	423
965	150	RC9656C	18.850	390	577
965	250	RC96510C	31.416	490	725
1220	50	RC12202C	7.952	415	766
1220	150	RC12206C	23.856	440	960
1220	250	RC122010C	39.761	615	1147



This catalog reflects our most used products. Please refer to our full line catalog for the complete range.

## Locking Collar [R..L-series]

Single-acting | Load return

### Push, mechanical load holding

- Positive mechanical lock to support load
- Support lifted load for extended periods of time with hydraulic pressure released



Force tons	Stroke mm.	Order No.	Oil Cap cc.	Retracted Height mm.	Weight kg.
55	50,8	R552L	362	161,9	15,3
55	152,4	R556L	1.087	263,5	26,3
55	254,8	R5510L	1.811	365,1	36,3
100	50,8	R1002L	677	184,2	30,0
100	152,4	R1006L	2.030	285,8	46,8
100	254,8	R10010L	3.383	387,4	64,5
150	50,8	R1502L	1.007	206,4	53,0
150	152,4	R1506L	3.019	308,9	80,4
200	254,8	R2002L	1.355	241,3	83,1
200	50,8	R2006L	4.062	342,9	117,6
280	152,4	R2802L	1.861	247,7	118,5
280	254,8	R2806L	5.583	349,3	163,0
280	50,8	R28010L	9.305	450,9	208,1
355	152,4	R3552L	2.326	292,1	173,0
355	254,8	R3556L	6.975	393,7	232,5
430	50,8	R4302L	2.841	333,4	252,4
430	152,4	R4306L	8.520	435,0	329,2
430	254,8	R4310L	14.201	536,6	405,9
565	50,8	R5652L	3.710	371,2	368,2
565	152,4	R5656L	11.129	473,1	468,0
565	254,8	R56510L	18.548	574,7	568,0

## Locking Collar [RC..L-series]

Single-acting | Load return

### Push, mechanical load holding

- Positive mechanical lock to support load



Force tons	Stroke mm.	Order No.	Oil Cap cc.	Retracted Height mm.	Weight kg.
740	50	RC7402L	4.811	395	545
740	150	RC7406L	14.432	495	683
740	250	RC74010L	24.053	595	821
965	50	RC9652L	6.280	455	714
965	150	RC9656L	18.849	555	990
965	250	RC96510L	31.400	635	1.170
1220	50	RC12202L	7.949	443	969
1220	150	RC12206L	23.857	598	1.310
1220	250	RC122010L	39.741	698	1.530

## Locking Collar [RA..L-series]

Single-acting | Spring return

### When portability is a key factor

- Half the weight of steel cylinders
- Support lifted load for extended periods of time with hydraulic pressure released



Force tons	Stroke mm.	Order No.	Oil Cap cc.	Retracted Height mm.	Weight kg.
55	155,5	RA556L	1.109	317,5	13,4
100	158,8	RA1006L	2.116	339,7	29,1

## Swivel Caps [For use with cylinders]

### Reduce the effect of off center loading

- Tilts up to 5 degrees
- Radial grooves on top of cap reduce load slippage



For use with cylinders	Order No.	Force tons	Weight kg.
RC740°C + RC965°C	2000824	740-965	72
RC1220°C + ..D + ..L	2000825	1220	113
RC740*D	2000822	740	19
RC965*D	2000823	965	40
RC740*L + RC965*L	2000824	740-965	72
RL*	420866	55-100	1
RC* + RL*	420867	150-200	4
RC* + RL*	420868	280	6
RC* + RL*	420869	355	17
RC* + RL*	420870	435	24
RC* + RL*	420871	565	35



## Pancake Locking Collar [RC..P-series]

Single-acting | Load return

### For use where space is limited

- Support lifted load for extended periods of time with hydraulic pressure released
- Overflow port prevents piston from being overextended under load

Force tons	Stroke mm.	Order No.	Oil Cap cc.	Retracted Height mm.	Weight kg.
55	50	RC0552P	355	125	11
100	45	RC1002P	597	137	22
155	45	RC1552P	905	148	39
240	45	RC2402P	1.413	155	59
380	45	RC3802P	2.208	178	110
620	45	RC6202P	3.618	192	193



### Power Team gives museum project a lift

#### Challenge:

To lower the basement floor by 1.4 meters, removing the basement walls to open up space for the new facilities and street-level entrance and with control and maximum flexibility for a very restricted budget.

#### Solution:

Using several Power Team hand pumps and sets of cylinders that would be spread out along each beam. Cylinders were selected that could fit in the very tight gaps available to accommodate the lifting equipment



This catalog reflects our most used products. Please refer to our full line catalog for the complete range.

## High Tonnage [R..D-series]

Double-acting | Hydraulic return



Push - Pull, Press for low-cycle application

- Built-in safety relief valve prevents over-pressurization of the retract circuit

Force tons	Stroke mm.	Order No.	Oil Cap cc.	Centre Hole mm.	Retracted Height mm.	Weight kg.
100	50,8	R1002D	676	315	168,7	24,5
100	152,4	R1006D	2.027	945	270,3	36,8
100	254,0	R10010D	3.378	1.574	371,9	49,0
150	50,8	R1502D	1.007	485	188,9	43,1
150	152,4	R1506D	3.021	1.456	290,5	61,7
200	50,8	R2002D	1.355	643	206,8	61,7
200	152,4	R2006D	4.064	1.929	308,4	84,9
200	254,0	R20010D	6.773	3.214	410,0	108,5
280	51,8	R2802D	1.861	774	233,8	99,4
280	152,4	R2806D	5.579	2.322	335,4	134,8
280	254,0	R28010D	9.299	3.870	437,0	170,7
355	50,8	R3552D	2.326	777	288,9	147,0
355	152,4	R3556D	6.977	2.332	390,5	191,1
430	50,8	R4302D	2.840	977	312,7	199,3
430	152,4	R4306D	8.521	2.932	414,3	253,3
430	254,0	R43010D	14.202	4.887	515,9	305,5
565	50,8	R5652D	3.710	1.260	345,3	281,0
565	152,4	R5656D	11.129	3.779	446,9	350,4
565	254,0	R56510D	18.548	6.298	548,5	420,4

## Center Hole [RH-series]

Double-acting



Ideal for pulling and tensioning of cables, anchorbolts, forcing screws, etc.

- Built-in safety feature prevents overpressurization of the retract circuit

Force tons	Stroke mm.	Order No.	Oil Cap cc.	Centre Hole mm.	Retracted Height mm.	Weight kg.
30 (15)	76,2	RH303	122	32,5	179,4	13,5
30 (15)	152,4	RH306D	247	32,5	281,0	20,4
30 (20)	257,2	RH3010	410	33,3	438,2	27,7
60 (25)	101,6	RHA604D	469	54,0	241,3	16,2
60 (25)	127,0	RH605	586	54,0	241,3	33,1
60 (40)	257,2	RH6010	754	54,4	458,8	54,5
100 (45)	38,1	RH1001	293	79,8	165,1	38,6
100 (50)	152,4	RH1006	895	52,4	314,3	43,1
100 (45)	257,2	RH10010	1996	79,8	495,3	109,0
150 (70)	127,0	RH1501	1268	65,1	311,2	67,2
150 (75)	203,2	RH1508	1843	80,2	349,3	103,1
200 (75)	203,2	RH2008	3214	103,2	408,0	142,0

## High Tonnage [RD-series]

Double-acting | Hydraulic return



Push - Pull, Press for high-cycle application

- Grooved ring pattern in load cap helps guard against load slippage

Force tons	Stroke mm.		Order No.	Oil Cap cc.		Retracted Height mm.	Weight kg.
	Push	Pull		Push	Pull		
10	4	158,8	RD106	228	90	296,9	10,0
10	4	254,0	RD1010	366	144	398,5	12,7
25	8	158,8	RD256	528	166	314,3	18,1
25	8	362,0	RD2514	1.205	376	517,5	29,5
55	28	158,8	RD556	1.132	577	329,4	27,9
55	28	333,4	RD5513	2.376	1.212	504,0	40,9
55	28	460,4	RD5518	3.280	1.673	657,2	64,5
80	44	333,4	RD8013	3.421	1.901	517,5	53,6
100	44	168,3	RD1006	2.242	959	350,0	57,2
100	44	333,4	RD10013	4.440	1.902	515,1	82,2
100	44	511,2	RD10020	6.809	2.919	718,3	118,0
150	73	168,3	RD1506	3.334	1.606	377,8	85,4
150	73	333,4	RD15013	6.604	3.180	542,9	123,5
150	73	460,4	RD15018	9.132	4.392	673,9	170,7
200	113	168,3	RD2006	4.485	2.457	406,4	118,9
200	113	333,4	RD20013	8.886	4.869	571,5	161,6
200	113	460,4	RD20018	12.270	6.722	723,9	200,7
300	147	152,4	RD3006	5.920	2.903	488,9	172,5
300	147	330,2	RD30013	12.825	6.281	630,2	296,9
400	186	152,4	RD4006	7.724	4.051	489,7	265,6
400	186	330,2	RD40013	16.744	8.790	667,5	349,6
500	245	152,4	RD5006	9.774	4.838	522,3	371,8
500	245	330,2	RD50013	21.189	10.480	700,1	495,8

## High Tonnage [RC..D-series]

Double-acting | Hydraulic return



Push - Pull and Press

- Cylinders come standard with hardened caps

Force tons	Stroke mm.	Order No.	Oil Cap cc.	Retracted Height mm.	Weight kg.
740	50	RC7402D	4.811	283	304
740	150	RC7406D	14.132	398	398
740	250	RC74010D	24.053	508	490
965	50	RC9652D	6.283	310	434
965	150	RC9656D	18.850	420	551
965	250	RC96510D	31.416	530	668
1220	50	RC12202D	7.952	330	584
1220	150	RC12206D	23.856	440	731
1220	250	RC122010D	39.761	550	878

## Hand Pumps [P-series]

Single-speed / Two-speed

Lightweight and steel design

- All pumps are fitted with internal relief valves
- All metal construction won't burn though in welding environments



Cyl. Type	Oil Cap cc.	Speed	Order No.	Volume/stroke		Weight kg.
				Low	High	
Single-acting	148	1	P12		1,1	2,6
	328	2	P19	5	1,2	3,0
	443	2	P19L	4.1	0,9	2,3
	738	1	P55		2,6	7,2
	738	2	P59	10,9	2,6	7,8
	1082	2	P59L	12	2,6	4,1
	2245	2	P157	10,7	2,6	11,8
	2245	2	P159	42,6	2,6	11,8
	5081	2	P300	42,6	2,6	25,1
	7539	2	P460	120,5	4,6	24,9
Foot Pump	738	2	P59F	9,0	2,1	6,4
Double-acting	2245	2	P157D	10,7	2,6	13,1
	2245	2	P159D	42,6	2,6	12,7
	5081	2	P300D	42,6	2,6	25,9
	7539	2	P460D	120,5	4,6	26,3

## Gasoline Pumps [PG30/55/120-ser.]

Gasoline driven

Ideal for remote locations

- A logical choice at work sites where electricity or compressed air are unavailable
- Larger reservoirs available



Cyl. Type	Usable lit.	Kw.	Order No.	Control Valve	Weight kg.
20,8	4,5	PG553	Adv-Hold Return	54,5	
20,8	4,10	PG1203	Adv-Hold Return	70,0	
Double-acting	6	1,5	PG304	Adv-Hold Return	14,5
	20,8	4,5	PG554	Adv-Hold Return	54,5
	20,8	4,1	PG1204	Adv-Hold Return	70,0

## Air Pumps [PA6/PA9-series]

Single-acting / Double-acting

Compact, lightweight and portable

- Air supply 3-8 bar
- Easier to operate than a hand pump, giving you the speed you need at an affordable price



Cyl. Type	Oil lit.	Control	Order No.	Tank	Weight kg.
0,5	Hand	PA9H	Aluminum	6,8	
1,6	Foot	PA6	Polyethylene	6,3	
1,6	Remote	PA6R	Polyethylene	9,3	
1,6	Remote	PA6RM	Metal	9,8	
7,3	Foot	PA6-2	Polyethylene	11,1	
1,6	Foot	PA6M	Metal	8,2	
3,0	Foot	PA6M-1	Metal	10,7	
9,1	Foot	PA6M-2	Metal	14,5	
1,6	Manual	PA6D	Polyethylene	8,3	
Double-acting	1,6	Manual	PA6DM	Metal	9,2
	3,0	Manual	PA6DM-1	Metal	12,7
	7,3	Manual	PA6D-2	Polyethylene	13,0
	9,1	Manual	PA6DM-2	Metal	16,4

## Air Pumps [PA17/46/55-series]

Two speed

Use where air is preferred source of energy

- Rotart-style air motor



Cyl. type	Usable lit.	Order No	Control valve	Weight kg.
9,5	PA462	Adv-Hold Return	27,2	
Single/Double-acting	4,7	PA174	Adv-Hold Return	18,6
	9,5	PA464	Adv-Hold Return	27,6
	9,5	PA464R	Adv-Hold Return	35,3
	9,5	PA464RA	Auto Dump	35,8
	9,5	PA554	Adv-Hold Return	32,0

For use with single acting cylinders 

For use with double acting cylinders 

## Electric/Battery Pump [PR10-series] Two speed

High performance in compact package

- Portable power source for hydraulic cylinders and tools
- Models have 2,4m power cord with alligator clips to connect to any 12 volt battery



1st l./min.	2nd l./min.	Oil Cap. liters	12V DC-uni Function	Tank	Order No.	Kg incl. oil
1.9	0.2	1	Autodump	Poly	PR102A	9
1.9	0.2	1	Adv-Hold Return	Poly	PR102	9
3.9	0.3	5	Adv-Hold Return	Poly	PE172DC	23

1st l./min.	2nd l./min.	Oil Cap. liters	Contr.	Function	Tank	Order No.	Kg incl. oil
1.9	0.2	1	Man.	Adv-Hold Return	Poly	PR104	9
3.9	0.3	5	Man.	Adv-Hold Return	Poly	PE174DC	23

## Electric Pump [PE17-series] Two speed

For maintenance and construction applications

- Extremely quiet noise level (67-81 sBA)
- For maintenance and construction applications



1st l./min.	2nd l./min.	Oil Cap. liters	Contr.	Function	Tank	Order No.	Kg incl. oil
3.9	0.2	6	Man.	Autom. Return	Metal	PE172AM-E220	24
3.9	0.2	5	Man.	Autom. Return	Poly	PE172A-E220	20
3.9	0.2	6	Man.	Adv-Hold Return	Metal	PE172M-E220	24
3.9	0.2	5	Man.	Adv-Hold Return	Poly	PE172-E220	20
3.9	0.2	6	Sol.	Adv-Hold Return	Metal	PE172SM-E220	24
3.9	0.2	5	Sol.	Adv-Hold Return	Poly	PE172S-E220	20

1st l./min.	2nd l./min.	Oil Cap. liters	Contr.	Function	Tank	Order No.	Kg incl. oil
3.9	0.2	5	Man.	Adv-Hold Return	Poly	PE174-E220	20
3.9	0.2	6	Man.	Adv-Hold Return	Metal	PE174M-E220	24

## Electric Pump [PE30-series] Two speed

Ideal for maintenance and construction applications

- Starts under full load even when voltage is reduced to 50% of nominal rating



1st l./min.	2nd l./min.	Oil Cap. liters	Contr.	Function	Tank	Order No.	Kg incl. oil
5	0.5	3.5	Man.	Auto Dump	Alum	PE302A-E220	19
5	0.5	5.5	Man. Switch	Adv-Hold Return	Alum	PE302-E220	19
5	0.5	3.5	Man. Switch	Adv-Hold Return	Alum	PE303-E220	19
5	0.5	3.5	Man.	Adv-Hold Return	Alum	PE303R-E220	19
5	0.5	3.5	Sol.	Adv-Hold Return	Alum	PE302S-E220	19
5	0.5	3.5	Man.	Adv-Hold Return	Alum	PE302R-E220	19
5	0.5	6	Man.	Adv-Hold Return	Alum	PE303R-2-E220	22
5	0.5	6	Man.	Auto dump	Alum	PE302A-2-E220	22
5	0.5	6	Man. Switch	Adv-Hold Return	Alum	PE302-2-E220	22
5	0.5	6	Man. Switch	Adv-Hold Return	Alum	PE303-2-E220	22
5	0.5	6	Sol.	Adv-Hold Return	Alum	PE302S-2-E220	22

1st l./min.	2nd l./min.	Oil Cap. liters	Contr.	Function	Tank	Order No.	Kg incl. oil
5.0	0.5	3.5	Man.	Adv-Hold Return	Alum	PE304R-E220	19
5.0	0.5	3.5	Man. Switch	Adv-Hold Return	Alum	PE304-E220	19
5.0	0.5	6	Man.	Adv-Hold Return	Alum	PE304R-2-E220	22
5.0	0.5	6	Man. Switch	Adv-Hold Return	Alum	PE304-2-E220	22

For use with single acting cylinders 

For use with double acting cylinders 

## Electric Pump [PE46-series] Two speed

Ideal for indoor maintenance and production applications

- 24 volt control circuit on all units with remote control
- Best suited for indoor maintenance and production applications



1st l./min.	2nd l./min.	Oil Cap. liters	Contr.	Function	Tank	Order No.	Kg incl. oil
6.7	0.6	9.5	Man.	Adv-Hold Return	Metal	PE462-E220	36
6.7	0.6	9.5	Sol.	Adv-Hold Return	Metal	PE462S-E220	36
6.7	0.6	9.5	Man.	Auto dump	Metal	PE462A-E220	36

1st l./min.	2nd l./min.	Oil Cap. liters	Contr.	Function	Tank	Order No.	Kg incl. oil
6.7	0.6	10	Man.	Adv-Hold Return	Metal	PE464-E220	36
6.7	0.6	10	Sol.	Adv-Hold Return	Metal	PE464S-E220	36

## Electric Pump [PE55-series] Two speed

Heavy duty multiple-applications pump

- Heavy construction and concrete stressing
- Low voltage starting possible



1st l./min.	2nd l./min.	Oil Cap. liters	Contr.	Function	Tank	Order No.	Kg incl. oil
11.3	0.9	8.5	Man.	Adv-Hold Return	Metal	PE552-E220	30
11.3	0.9	8.5	Man.	Auto dump	Metal	PE552A-E220	30
11.3	0.9	8.5	Man.	Adv-Hold Return	Metal	PE553-E220	30
11.3	0.9	8.5	Sol.	Adv-Hold Return	Metal	PE552S-E220	30

1st l./min.	2nd l./min.	Oil Cap. liters	Contr.	Function	Tank	Order No.	Kg incl. oil
11.3	0.9	9	Man.	Adv-Hold Return	Metal	PE554-E220	30
11.3	0.9	9	Sol.	Adv-Hold Return	Metal	PE554S-E220	30

## Electric Pump [PQ120-series] Up to 400 ton 1,6 l/min

Ideal for press operation

- Low speed, high torque pump designed specifically for heavy duty, extended cycle operation, ideal for pressing



1st l./min.	2nd l./min.	Oil Cap. liters	Contr.	Function	Tank	Order No.	Kg incl. oil
9.7	1.6	20	Man.	Adv-Hold Return	Metal	PQ1203-E380	75
9.7	1.6	20	Sol.	Adv-Hold Return	Metal	PQ1203S-E380	75

1st l./min.	2nd l./min.	Oil Cap. liters	Contr.	Function	Tank	Order No.	Kg incl. oil
9.7	1.6	20	Man.	Adv-Hold Return	Metal	PQ1204-E380	75
9.7	1.6	20	Sol.	Adv-Hold Return	Metal	PQ1204S-E380	75



## Electric Pump [PE400-series]

Two speed / up to 1000 ton 5,6 l/min

Single or multiple cylinder applications

- Low noise level of 73-80 dBA



1st l./min.	2nd l./min.	Oil Cap. liters	Contr.	Function	Tank	Order No.	Kg incl. oil
16	5.6	63	Man.	Adv-Hold Return	Metal	PE4004-E380	223
16	5.6	63	Sol.	Adv-Hold Return	Metal	PE4004S-E380	230



## Hydraulic Spreaders

Spring-return | Retract automatically

Use to lift machines or as a clamp

- It is a hydraulic pry bar
- Spread concrete forms or rebar or perform straightening jobs



Capacity tons	Order No.	Min. Clearance Required mm.	Max. Spread mm.	Oil cc.	Weight kg.
1 ton	HS2000	14,2	101	4	2,2
1,5 ton	HS3000	30,2	292	20	10

## Pipe Flange

Hydraulic Spreaders

No more "hammer and chisel" methods

- Flange spreaders should be used in pairs to provide an even spreading force



Capacity tons	Order No.	Standard Wedge Type	Weight kg.
5	HFS3A	60° Sharp	4,1
10	HFS6A	60° Sharp	8,2

## Nut splitter

Single-acting | Spring-return

Removal of seized and corroded nuts

- Specially designed tool steel cutter blade penetrates the nut to the precise point where it cracks, stopping short of the bolt threads



Capacity tons	Order No.		Class			
			#5	#9	#10	#12
15 ton	HNS150	Bolt Size Max	24	24	22	19
		Nut Thickness	32	21	26	19
	HNS150A	Bolt Size Max	24	24	22	19
		Nut Thickness	24	21	26	19
25 ton	HNS225	Bolt Size Max	36	36	30	29
		Nut Thickness	34	30	25	21

## Hydraulic Tester

Measure oil flow, pressure and temperature

Tests pump condition without removing pump from system. Max. 350 bar

- Temperature and flow readings are in metric and english, accurate to within ± 2% of full scale.
- Automatic pressure compensating feature lets you increase flow without affecting pressure setting



Order No.	Max Flow l./Min.	Flow Range l./Min.	Pressure Max	Weight kg.
HT50A	200	20-200	345	16,8
HT75	300	50-300	345	8,6
HT200	750	100-750	345	13,6

## Inflatable Jacks

The Load Lifting Alternative

Ideal for structure moving, rescue work, lifting round tanks, maintaining pipelines and countless other tasks.

- Large surface area and material flexibility allow jacks to lift loads on soft or compressible surfaces without support cribbing being necessary



Lifting Cap. tons	Lifting Height mm.	Order No.	Air Contents at 8 bar l.	Max. Working Pressure bar	Length mm.	Width mm.	Collapsed Height mm.	Weight kg.
1,1	70	IJ13	2,3	8	140	130	25,4	0,5
3,6	120	IJ45	14,4	8	255	200	25,4	1,2
7	160	IJ76	42	8	305	305	25,4	1,9
12	225	IJ128	97	8	400	400	25,4	3,6
23,8	304	IJ2211	268	8	550	550	25,4	7,3
34	360	IJ3213	463	8	650	650	25,4	9,9
46,3	418	IJ4416	729	8	750	750	25,4	13,1
74,6	520	IJ7320	1.457	8	950	950	30,4	26,3

## Hoses

Polyurethane | Rubber

4:1 safety factor

- All have plastic hose guards except for the 1/4" I.D. polyurethane hoses which have spring guards
- 3/8" NPTF fittings on both ends
- Other hose lengths available



Hose I.D.	Length	Poly Order No.	Rubber Order No.
6,4 mm	0,6 m	9765E	
6,4 mm	0,9 m	9766E	9755E
6,4 mm	1,8 m	9767E	9756E
6,4 mm	2,4 m	9768E	9757E
6,4 mm	3,1 m	9769E	9758E
6,4 mm	3,7 m	9770E	9759E
6,4 mm	6,1 m	9771E	9760E
9,5 mm High Flow	1,8 m	9780E	9776E
9,5 mm High Flow	3,1 m	9781E	9777E
9,5 mm High Flow	6,1 m	9782E	9778E
9,5 mm High Flow	15,3 m	9759E	9735E

## Couplers

Standard & Flush-Face

- Complete quick coupler, 3/8" NPTF (includes two 9800 dust caps) Ordernr 9795



- Male (hose) half coupler, 3/8" NPTF Ordernr 9798



- Female (cylinder) half coupler with No. 9800 dust cap, 3/8" NPTF Ordernr 9796



## Gauges

Analogue | Digital

- Gauges feature an easily readable and highly visible, red day-glo needle
- High strength steel bourdon tube ensures high cycle life



Face Dia. Graduations	Bar	Use with Cylinder Series	Gauge No.
63,5 mm	0-700	All	9040E
100 mm	0-700	All	9052E
<b>Tons</b>			
100 mm	0-17,5, 0-30 and 0-50	RT172, RT302, RT503	9059E
100 mm	0-5	C & RLS	9053E
100 mm	0-10	C, RD, RH, RLS & RSS	9055E
100 mm	0-25	C & RD	9063E
100 mm	0-30	RH, RLS & RSS	9065E
100 mm	0-50	RH+, RLS & RSS	9067E
100 mm	0-55	C, R, RA & RD	9069E
100 mm	0-60	RH	9071E
100 mm	0-75	C, RLS & RD8013	9073E
100 mm	0-100	C, R, RA, RD, RH, RLS, RSS & RT1004	9075E
100 mm	0-150	C, R, RD & RLS	9077E
100 mm	0-200	R, RD & RH	9079E

## Fluids for high pressure

Standard, Flame Out, Biodegradable and Low Temp

- Prevents pump cavitation, additives prevent rust, oxidation and sludge



Oil Description	Quantity	Order No.
Standard Oil	0,9 l	9636
Standard Oil	3,8 l	9637
Standard Oil	9,5 l	9638
Standard Oil	208 l	9616
Flame-Out®	3,8 l	9639
Flame-Out®	9,5 l	9640
Biodegradable	3,8 l	9645
Biodegradable	9,5 l	9646
Low Temp.	3,8 l	9647



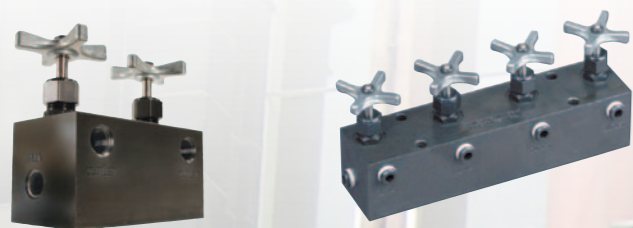


This catalog reflects our most used products. Please refer to our full line catalog for the complete range.

## Manifolds

### Remote and Pump mounted

- **Manifold with two needle valves for control of two cylinders, has four 3/8" NPTF ports**  
Ordernr 9642
- **Manifold with four needle valves for control of four cylinders, has six 3/8" NPTF ports**  
Ordernr 9644



## Fittings

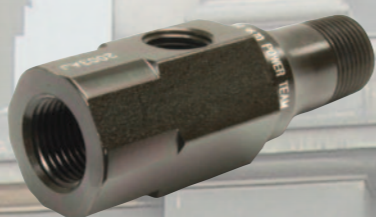
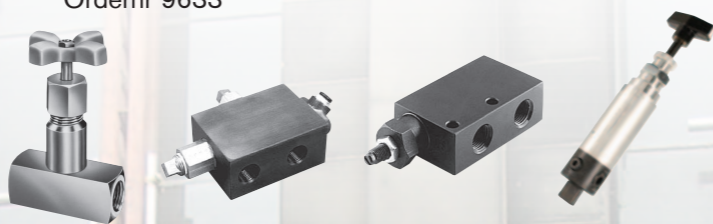
### For all applications

Order No.		
9670		<b>Tee adapter</b> 1/4" and 3/8" NPTF female and 3/8" NPTF male ports
9675		<b>Swivel connector</b> 3/8" NPTF male, 3/8" NPSM female
9678		<b>45° fitting</b> 1/4" NPTF male and female ends
9680		<b>Coupling</b> both ends 3/8" NPTF female
9681		<b>Street elbow</b> 3/8" NPTF male and female ends
9682		<b>Male connector</b> 3/8" NPTF male ends
9683		<b>Male connector</b> 3/8" NPTF male ends

## Valves

### All valves are painted, coated or plated for corrosion resistance

- **Shut off valve with 3/8" NPTF ports**  
Ordernr 9575
- **Pilot operated check valve with 3/8" NPTF ports**  
Ordernr 9581
- **Pressure relief valve with 3/8" NPTF ports**  
Ordernr 9623
- **In-line pressure regulator valve with two 3/8" NPTF inlet ports, one 1/8" NPTF tank port and 1m drain line kit**  
Ordernr 9633



## Bottle Jacks

### Low Profile

### The right choice for lower clearance jobs

- All jacks operate both vertically and horizontally for use in a variety of lifting, pushing, and spreading applications



Force tons	Stroke mm.	Order No.	Retracted height min. mm.	Metric tons at 700 bar	Weight kg.
12	95	9012A	171	10,9	6,4
20	86	9020A	181	18,1	10,1
30	79	9130A	181	27,2	13,7



## Sidewinder Jacks

### Mini Jacks

### Compact, fits in your palm

- The perfect addition to any toolbox, this remarkable little jack has multiple uses that are limited only by your imagination
- Use it as a jack or a spreader, and use it vertically or horizontally in limited clearance



Force tons	Stroke mm.	Order No.	Retracted height min. mm.	Metric tons at 700 bar	Weight kg.
5	19	9105A	63,5	4,5	1,9
5	38	9205A	88,9	4,5	2,4
10	30	9210A	120,7	9,1	5,5
20	30	9220A	130,2	18,1	8,0

## Hydra grip-o-matic

### Use with 2/3 jaw pullers

### A self contained pulling system in a compact package

- The harder the pulling force, the tighter the jaws grip for secure holding force
- Easily metered release valve control knob



Cyl. Cap. tons	Order No.	Reach Jaws mm.	Spread Jaws mm.	Stroke mm.	Weight kg.
6	PH63C	152	200	80	4,9
8	PH83C	190	249	80	6,6
11	PH113C	229	280	80	8,0
30	PH303C	375	540	110	32,3
8	PH82K	207	245	80	9,5
11	HST11S	150	102-410	80	14,5

## Hydraulic Presses

All presses available in CE

**Application:** Maintenance workshop, factory, school, test lab, etc.

- Type: Bench, floor and C-frame



Tons	Model	Pump Type	Cylinder Type	Order No.	Weight kg.	Pump Code
10 tons	Bench	Hand	Single-acting	SPM1010	41	P55
	Floor	Air	Single-acting	SP1010A	78	PA9
	Floor	Electric	Single-acting	SPE1010-E220	79	PE172-E220
	Floor	Hand	Single-acting	SPH1010	77	P55
	Floor	Electric	Double-acting	SPE1010D-E220	87	PE174-E220
25 tons	Bench	Hand	Single-acting	SPM256C	109	P59
	Floor	Air	Single-acting	SPA256	197	PA6
	Floor	Electric	Single-acting	SPE256-E220	210	PE172-E220
	Floor	Hand	Single-acting	SPM256	205	P59
	Floor	Air	Single-acting	SPA2514	310	PA6
	Floor	Hand	Single-acting	SPM2514	315	P159
	Floor	Electric	Single-acting	SPE2514-E220	300	PE172-E220
	Floor	Electric+Sol Valve	Single-acting	SPE2514S-E220	345	PE172S-E220
	Floor	Electric	Double-acting	SPE2514DS-E220	360	PE174S-E220
55 tons	Floor	Air	Single-acting	SPA556	320	PA6
	Floor	Hand	Single-acting	SPM556	325	P159
	Floor	Electric	Single-acting	SPE556-E220	333	PE172-E220
	Floor	Hand	Single-acting	SPM5513	435	P460
	Floor	Electric	Single-acting	SPE5513-E220	444	PE172-E220
	Floor	Electric+Sol Valve	Single-acting	SPE5513S-E220	480	PE172S-E220
	Floor	Electric	Double-acting	SPE5513D-E220	450	PE174-E220
	Floor	Electric+Sol Valve	Double-acting	SPE5513DS-E220	505	PE554S-E220
100 tons	Floor	Hand	Single-acting	SPM10010	770	P460
	Floor	Electric	Single-acting	SPE10010-E220	813	PE552-E220
	Floor	Electric	Single-acting	SPE10010R-E220	766	PE172-E220
	Floor	Electric	Double-acting	SPE10013DS	854	PQ1204S-E380

## Professional Hydraulic Bolting Solutions



Our Predator Series of torque wrenches includes both Square Drive and Low Clearance wrenches. The steel body design provides a compact tool that can be used in the most inaccessible bolting areas found in the industry. Each component on the tools has been optimized to minimize weight without sacrificing strength and durability, using steel alloy, high strength titanium and aluminum. Tools utilize a high grade nickel plated finish, making them suitable for sub-sea application in a salt water environment.

Our Predator Series of hydraulic electric and air pumps, the first constant horsepower pump or horsepower limiting pump in the portable hydraulic pump market. What can torque wrench users expect? In a word.....SPEED.

Our Predator range is extended with bolt tensioners and nut splitters. The bolt tensioner range include manual return, spring return and quick reaction subsea bolt tensioners. Our new nut splitter offers a reliable and effective solution to the removal of seized and corroded nuts.

Calibration, training and software are also available.

Please ask for our folder in which you will find our complete offering of bolting products.



### Safety First

Proper training is needed to operate and maintain hydraulic equipment with safety and efficiency. Power Team offers classes to help you safely operate and maintain your tools.

### Safety Seminar

Workplace safety should be a high priority to assure high pressure hydraulic tools are used in accordance with recommended safety procedures. Power Team safety training seminars demonstrate the proper methods for operating high pressure hydraulic tools to avoid equipment damage and lost time accidents. Safety seminars can be conducted at the customer facility, the job site or at one of the SPX Hydraulic Technologies facilities.



**Safety First**



## Power

Power Team hydraulic pumps, bolting products and accessories offer on-site solutions to enable assembly of large wind turbines. Growth in traditional and renewable energy requires increasing infrastructure among local, regional and global communities. Power Team high performance, hydraulic tools and systems help make this possible.



## Maintenance & Production

Power Team hydraulic pumps, cylinders, mechanical tools and accessories offer in-plant solutions where heavy lifting, lowering, pulling, pushing, pressing, spreading and holding in position are required. Look to Power Team products for all of your difficult in-plant maintenance and production jobs.



## Construction

Power Team high performance hydraulic pumps and post-tensioning jacks offer on-site solutions for today's demanding construction requirements. Bridge construction and repair, commercial building construction, post-tensioning and stressing as well as structure jacking and positioning are served by rugged and portable Power Team products maintenance and production jobs.



## Energy, Oil & Gas

Power Team high performance hydraulic products are working behind the scene at power generation plants, ocean based oil platforms, floating platform systems and land based oil rigs. Big jobs requiring flange integrity or general rig maintenance are accomplished with the assistance of Power Team hydraulic pumps and tools.



## Mining

Power Team high performance hydraulic pumps, cylinders and accessories offer on-site maintenance solutions for critical mining equipment. Despite the nature of difficult and demanding mining environments, Power Team products continue to perform in a robust, safe and reliable manner.

# POWER TEAM®

Albert Thijsstraat 12  
NL-6471 WX Eyselshoven  
Tel: +31 45 5678877  
Fax: +31 45 5678878  
Email: [infoeurope@powerteam.com](mailto:infoeurope@powerteam.com)

Your Power Team Distributor: